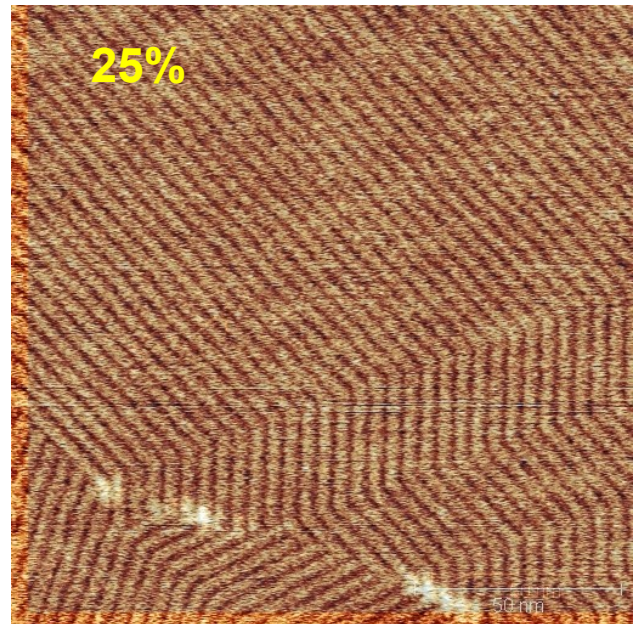
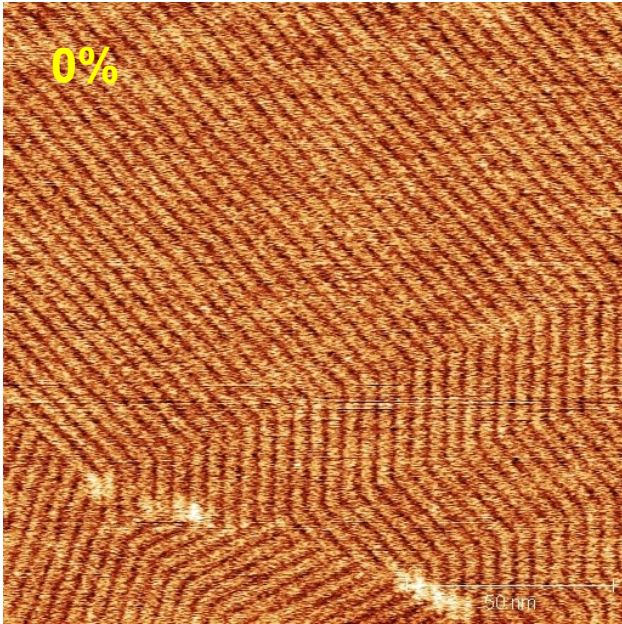


## SmartSPM 1000 - Performance Examples

### XY Closed Loop Performance at Sub-micron Scale



Two consecutive 150x150 nm topography scans of Cetyl Palmitate molecules on HOPG taken in 2.5 minutes one after another. The second image has been overlaid on the first, the transparency of the second image changing from 0% to 100%. Excellent performance of the XY closed loop system even at sub-micron scale can be derived from the perfect match between these two images after correction for the thermal drift (~2nm/minute).

