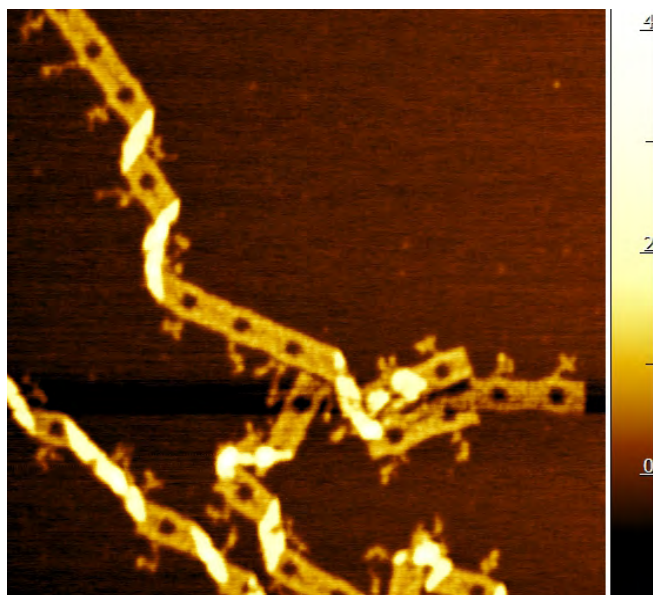


Advanced Scanning Modes for High Resolution AFM Imaging
Dissipation Mode of DNA origami on mica.



1x1 μm topography



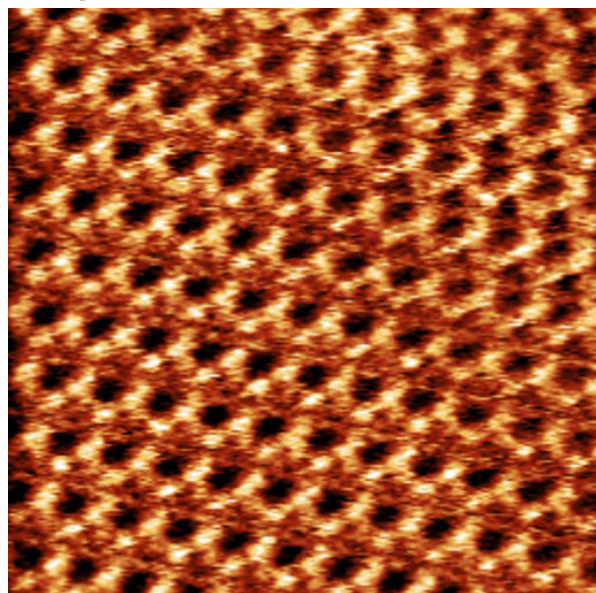
Frequency shift image

Internal structure of the DNA belt is clearly resolved in both the topography and the frequency shift channels.

Sample courtesy of professor Michael Norton, Marshall University

Dissipation mode provides clear unambiguous criterium for the choice of free amplitude and the set point, enabling high resolution imaging even with the blunt tips.

Dissipation mode + Advanced Line Scan



20x20 nm phase shift image of Cholesteryl Stearate on HOPG. True molecular resolution is achieved in ambient conditions.

Image courtesy of Dmitry Evplov, AIST-NT Inc.

